



Incident Management Team

Braden Britt, IC

**Fire Information (509) 808-6720 (Call or Text)**

## News Release – Lower Granite Fire

July 30<sup>th</sup>, 2024

**Pomeroy, WA:** The Lower Granite Fire started about 12:15pm on July 29th, 2024. The fire quickly spread east with strong, gusty winds, threatening croplands, cattle, rangeland and structures. Garfield County Fire District 1 initially responded to the fire, working with local farmers and ranchers to stop the fire progression. As the fire continued to grow, aerial support and additional resources were requested. Washington State Patrol authorized the response of state firefighting resources, mobilizing four strike teams of district fire engines to respond to the fire.

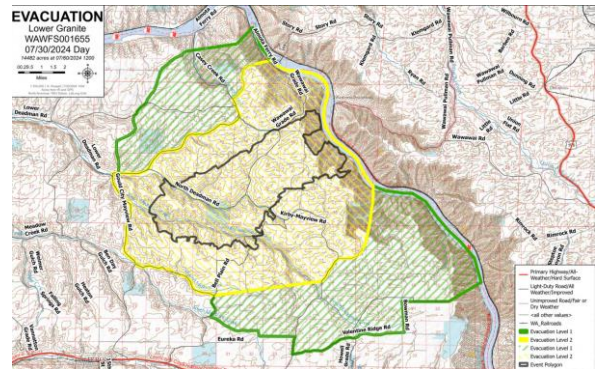
Wildland crews worked with aerial resources local farmers and rancher to stop fire progression throughout the evening. Garfield County Fire District 1 patrolled structures in the area, located and extinguishing discovered hot spots around structures.

Strike teams have been arriving throughout today, relieving local initial attack crews and engaging in structure protection and mitigation. Hand crews have been strengthening fire line and removing unburned fuels in steep, rugged terrain south of Wawawaii Grade, where two fingers of the fire burned down towards the Snake River.

Northeast Washington Incident Management Team Type 3, Team 1 is assuming command of the fire on July 30<sup>th</sup>, working with Garfield County Fire District 1 in fire suppression efforts.

Level 2 and Level 1 Evacuations remain in effect (see map).

Quick Facts	
Lower Granite Summary	
Approximate Size	14,482 acres
Containment	Overall: 0%
Resources on Fire	1- 20 Person Hand Crew 12 - Firefighting Engines 3 - Water Tenders 1 - Helicopter (Type 2)
Total Personnel	87
Fire Danger	Extreme
Values at Risk	Farmland/Grain Crops, Rangeland/Cattle, Structures, Power Infrastructure



### **PUBLIC AND FIRE FIGHTER SAFETY IS THE NUMBER ONE PRIORITY**

**Do not enter into the burn area of the fire. Fire weakened trees can fall suddenly and hot deep ash pits can cause severe burns and are present within the burned area.**



*This Fire Update was produced by Isabelle Hoygaard Reeser, Northeast Washington Interagency Incident Management Team 1*

Follow Us for  
Updated Fire  
Information:



InciWeb



@NewFireInfo